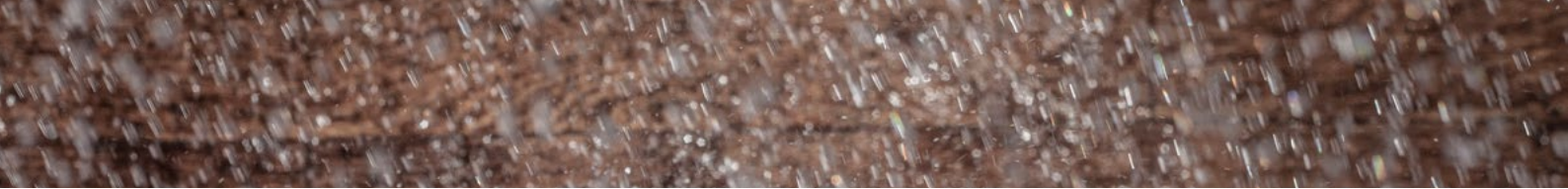


INDUSTRIAL CAMERA HOUSING **CH50**

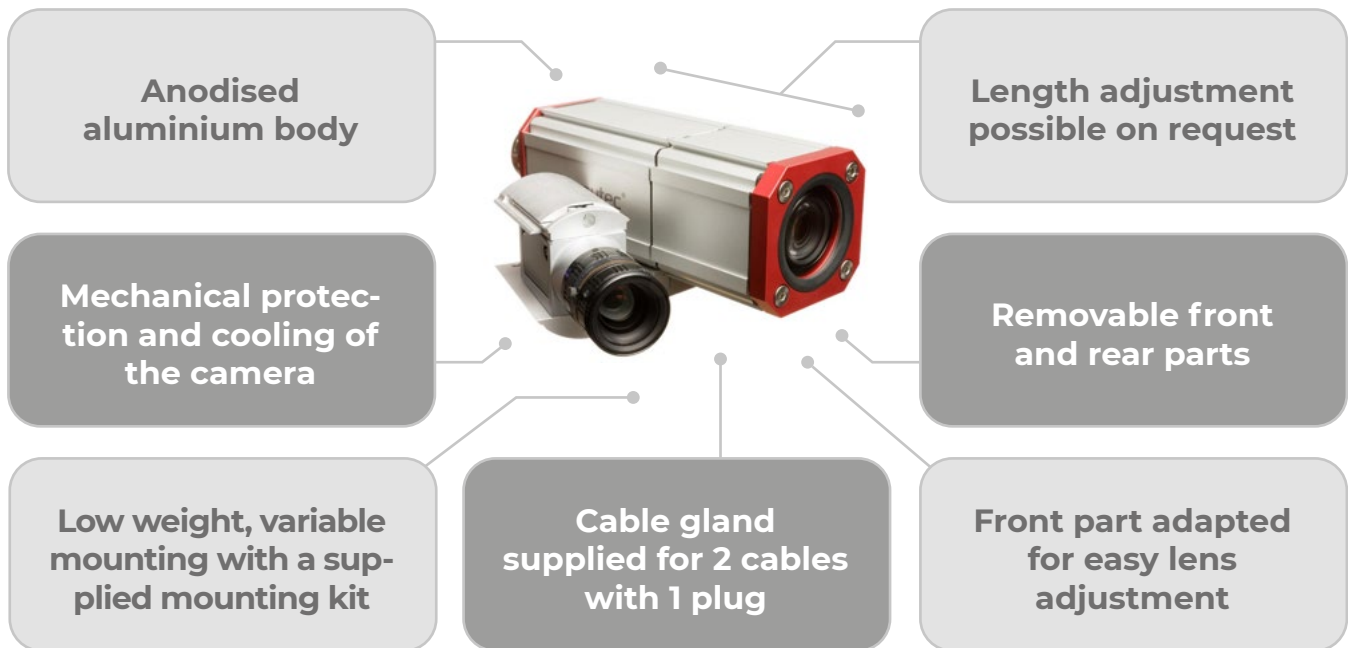


EN



CH50 industrial camera housing

The CH50 industrial camera housing is perfect for machine vision systems in industry. With an IP69 rating, it provides reliable protection. Its aluminium body combines strength with modern design. With customisation and extension options, it offers flexibility for different applications. Easy operation and versatile use make this housing the optimal choice for industrial applications.



Material properties

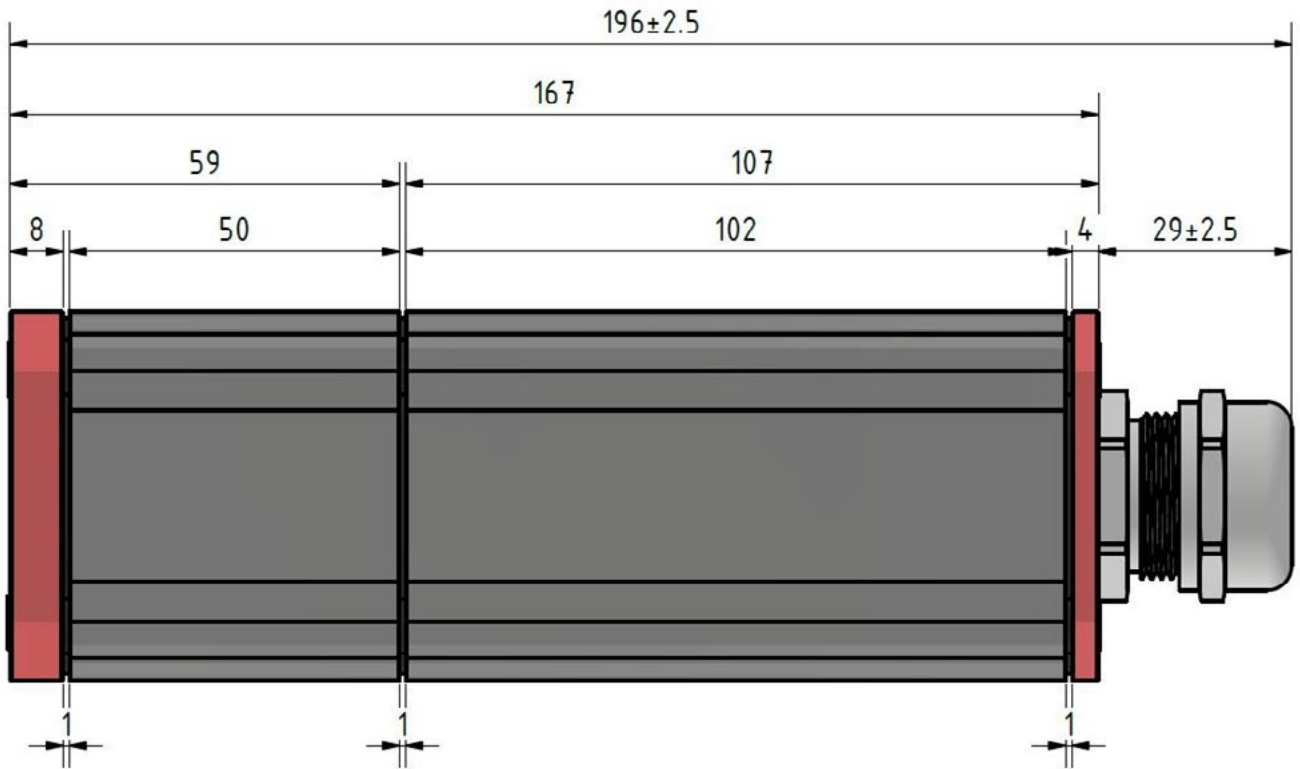
| | |
|---------------------------|---|
| Body | Anodised aluminium |
| Seals | EPDM |
| Cover glass of CH50.DIA35 | N-BK7, anti-reflective MgF2 coating (standard 390~700 nm) |
| Cover glass of CH50.DIA50 | PMMA |
| Cable gland | Nickel plated brass, NBR |
| Mounting kit | Anodised aluminium |

Dimensions, environment

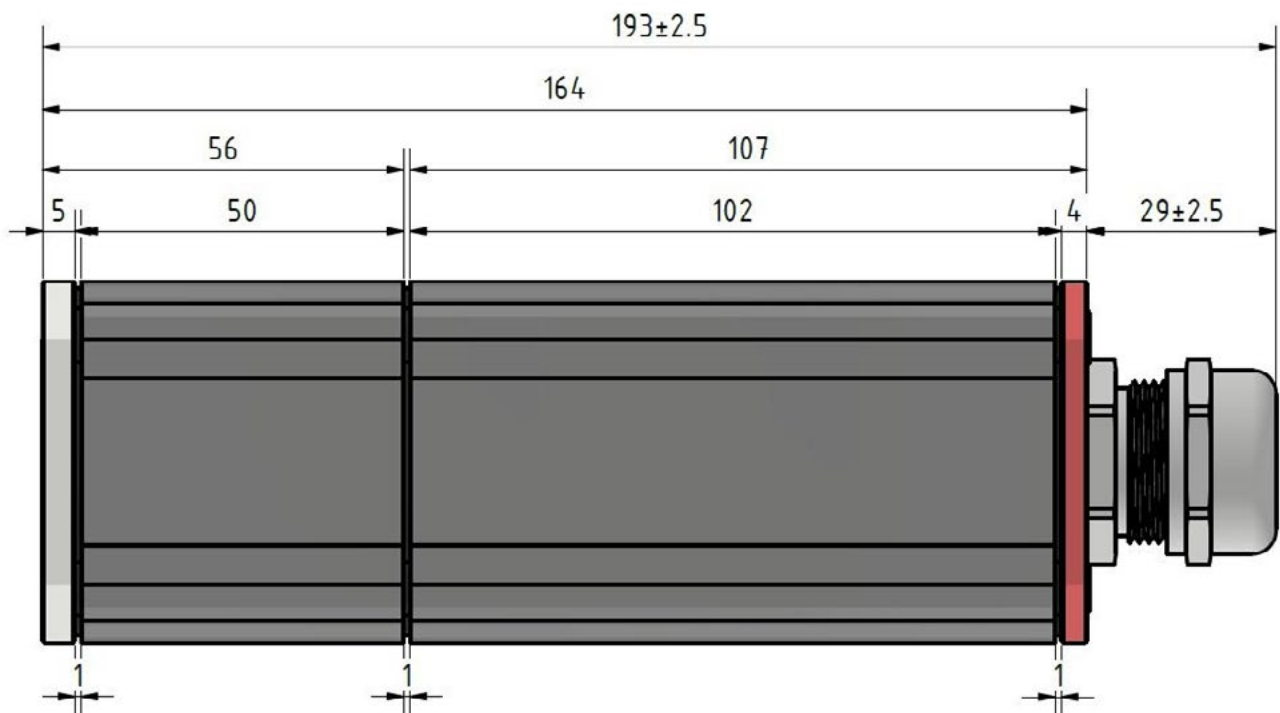
| | |
|-----------------------------------|---|
| External dimensions of CH50.DIA35 | Cross section 56 x 56 mm, length 196 ± 2.5 mm including a cable gland |
| External dimensions of CH50.DIA50 | Cross section 56 x 56 mm, length 193 ± 2.5 mm including a cable gland |
| Internal dimensions | Ø 50 mm |
| Cover glass of CH50.DIA35 | Vision aperture Ø 35 mm |
| Cover glass of CH50.DIA50 | Vision aperture Ø 50 mm |
| IP rating | IP 69 |
| Weight | 600 g including a spacer and mounting kit |

Product dimensions

Standard dimensions of the **CH50.DIA35** housing



Standard dimensions of the **CH50.DIA50** housing

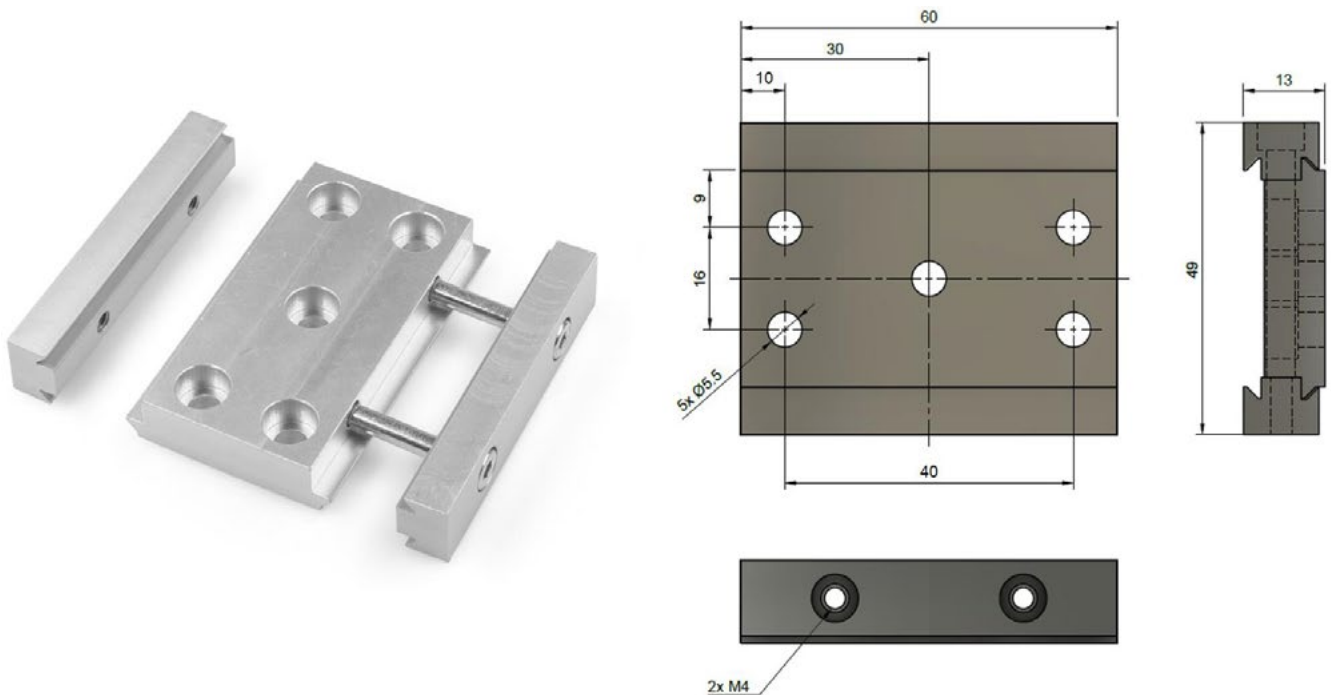


Supplied accessories

1. Cable gland with an insert for 2 cables \varnothing 4–6 mm and plug for one cable. Possibility of cutting to insert a cable with connectors.
2. Spacer for mounting the camera.
3. 2x screw M2x6 DIN 912, 2x screw M3x6 DIN 912 for fixing the camera to the lower camera mount.
4. Camera housing mounting kit.

Mounting kit

Easy mounting of the housing thanks to ready-made mounting holes in the base for screws up to M5.



Accessories (not included in the standard package)



Simple air blow-off.

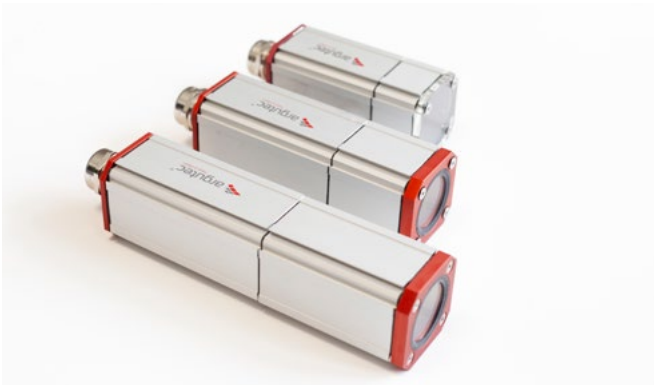
BLOW-OFF CH50



Articulated holder for easy handling.

HOLDER UU2

Atypical product options



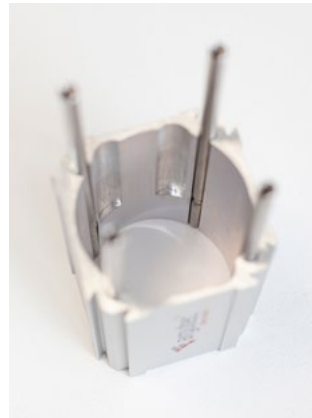
Atypical length



Additional extension



The rear housing can be ordered without a gland hole



Left – Additional slots for a camera (29 x 44 mm)



Right – Different inserts for cables



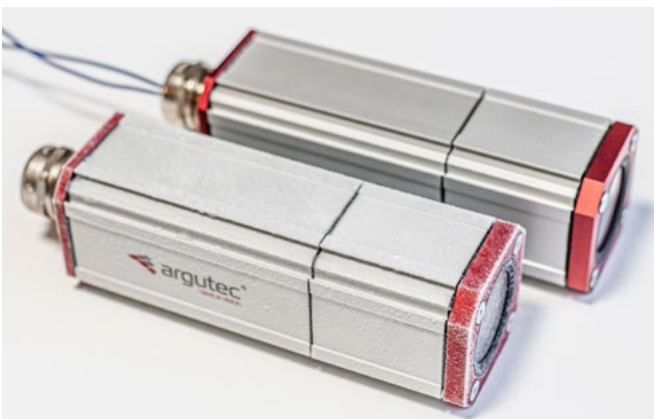
Custom logo



Left – Different layout of holes in the mounting plate



Right – Mounting plate for different camera size



Defrosting



Colour variants

Argutec, s. r. o.

Na Nivách 1339/4
700 30 Ostrava-Zábřeh
Czech Republic

www.argutec.eu